

Lucernario aerante[®] INOX

For lightwells



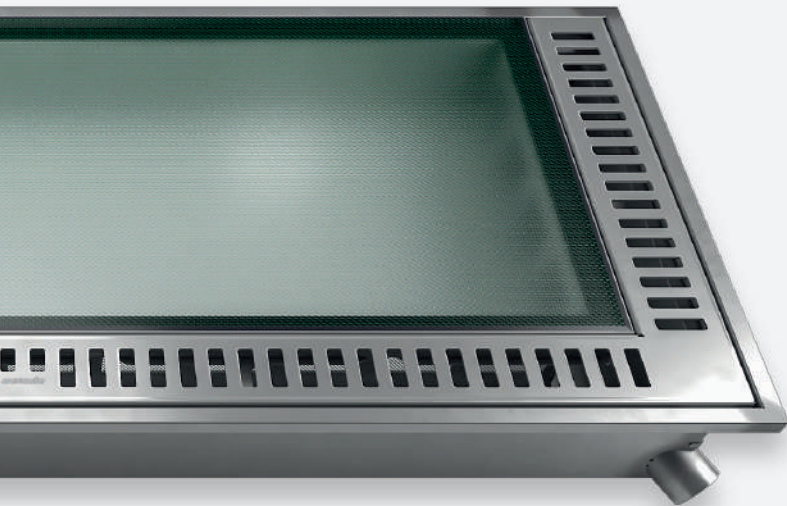
Certified safety

RC2
class

Certified glass

1322 lb
bearing capacity





Reinventing the traditional lightwells

Lucernario aerante INOX can be installed during the construction or renovation of terraces and sidewalks with lightwells. Also ideal for applications in the garden, on **precast lightwells made of concrete or plastic**. Stainless-steel structure, with high structural bearing capacity, for easily adapting to a variety of situations. The front drainpipes allow rainwater to be channelled into dedicated drainage pipes on the ground floor for **sheltered, clean and dry basement windows**.

Why choose a Lucernario aerante INOX



Natural Light

The laminated glass has a slight satin finish which permits better light diffusion in the basement. The non-slip pattern helps protect the surface of the glass from scratches.



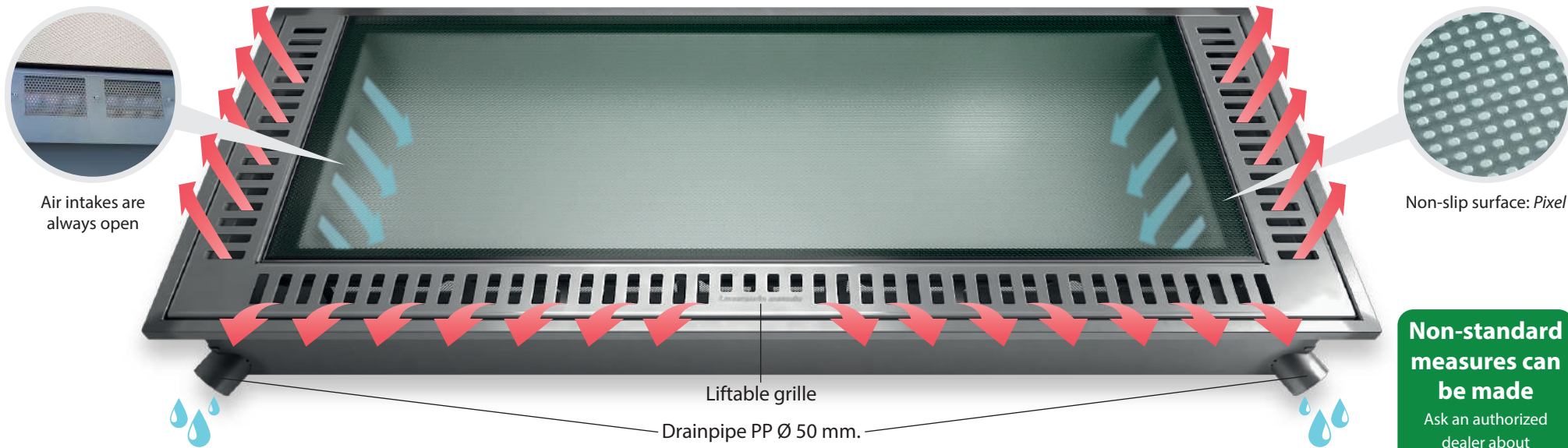
Unmatched cleaning

Dirt is collected inside an inspection channel for easy cleaning from the outside. Micro-perforated meshes prevent the passage of insects and debris.



Security

The technology applied to the product makes it safer than a traditional grille, reducing the risk of break-in through the basement. Security product certified RC2.



Non-standard measures can be made
Ask an authorized dealer about times and costs.

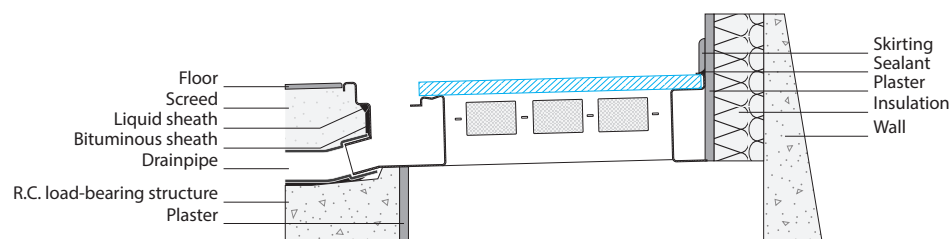
How it works

Lucernario aerante INOX collects rainwater from its drainage channel and permits ventilating the underground environment through the air intakes. The air intakes, which are **always open**, are protected by **anti-insect and dirt** meshes. Simply lift the grille to clean the drainage channel.

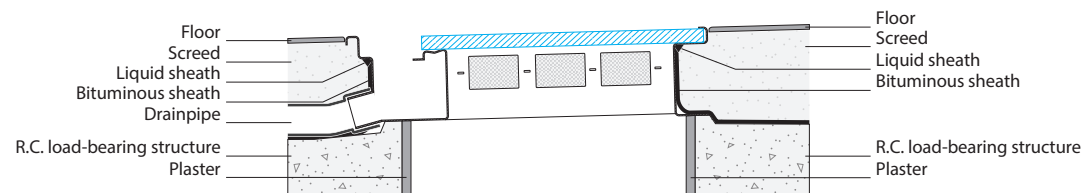
The finishes

Lucernario aerante INOX is made of semi-gloss steel for a modern but not too flashy appearance. The shatterproof glass plays a major role in terms of **security**, it provides natural light and allows safe transit thanks to the **non-slip pattern R11**.

Installation pattern up against a wall

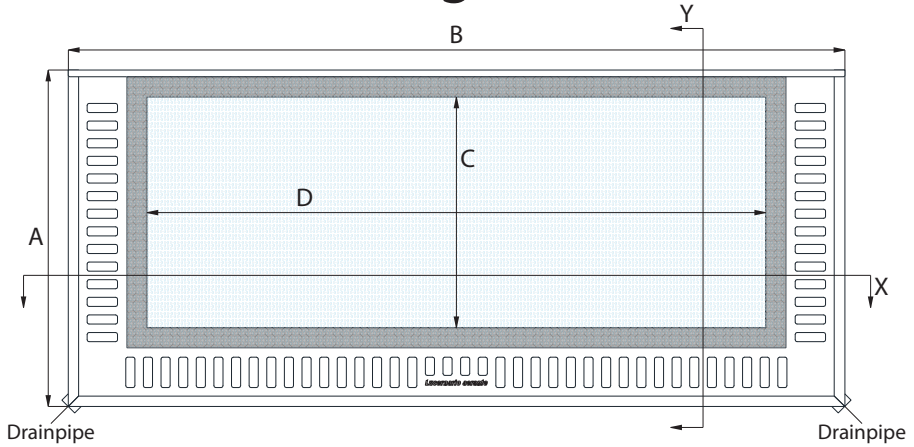


Installation on a terrace (away from the wall)



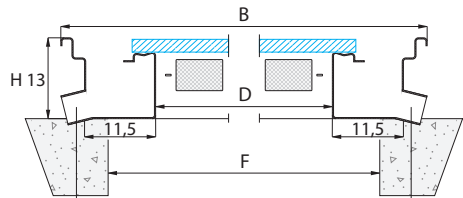
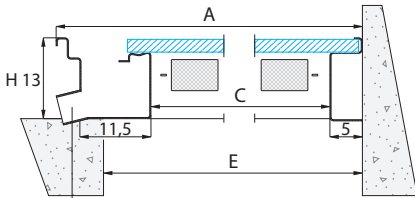
These installation diagrams are provided as examples. We recommend you consult a professional who can define the ideal realisation of your floor.

Size guide



Longitudinal section (Y)

Cross-section (X)



Drainpipe PP Ø 50 mm.

Drainpipe PP Ø 50 mm.

Available dimensions

Model	Product dimensions		Luminous compartment			"From-to" base hole		Weight
	A	B	C	D	CxD(m ²)	E	F	Kg
XS55	55	130	34,6	99,6	0,35	35-47	100-114	44
NEW XS85	85	130	64,6	99,6	0,64	65-77	100-114	63
S65	65	150	44,6	119,6	0,53	45-57	120-134	57
S85	85	150	64,6	119,6	0,77	65-77	120-134	73
M65	65	170	44,6	139,6	0,62	45-57	140-154	64
L65	65	190	44,6	159,6	0,71	45-57	160-174	71

Where not specified, measurements are in centimetres.

See the Technical Data Sheet on the website inox.lucernarioaerante.it before purchasing the product.

Lucernario aerante INOX
For lightwells

WARRANTY PROGRAM



*Prove your purchase by registering your product on inox.lucernarioaerante.it and obtain the Gold Warranty lasting 14 years.

Authorized dealer



No more same old grilles
inox.lucernarioaerante.it